

NEW STOCK LIST USED AND DEMO MACHINES AT STOLL

07 June 2013

Contact:

If you would like to have a quotation or if you have any questions please do not hesitate to contact the responsible for your market at Stoll or directly the Stoll Reconditioned Machines Department. All machines can be converted to other gauges. Please contact us for availability.

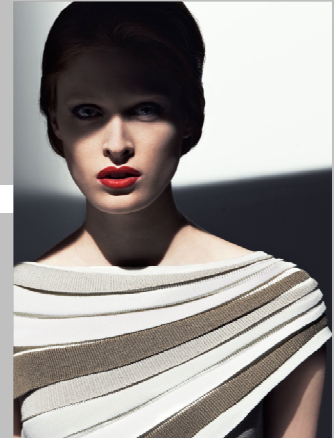
Mr. Matthias Knecht Phone: 00 49 - 71 21 - 31 34 40
 Mr. Thomas Streicher Phone: 00 49 - 71 21 - 31 34 66
 Mr. Josef Oehler Phone: 00 49 - 71 21 - 31 34 10

E-Mail: josef.oehler@stoll.com
 Fax: 00 49 - 71 21 - 31 34 25

Delivery time: approx. 5 to 7 weeks for reconditioned machines.
 Guarantee: 12 months for fully reconditioned machines.

STOLL
 KNIT AHEAD

www.stoll.com



Subject to Prior Sale

Pos.	Model	KW	Year	Gauge	Needle	QTY	Info I	Additional Information	System
1	CMS311TC-L	183	2003	18,00.0	18,00.0	1	Used		ST268
2	CMS330TC	127	2004	08,00.0	08,00.0	1	Used		ST268
3	CMS330TC	127	2004	08,00.0	08,00.0	1	Used		ST268
4	CMS330TC	127	2004	12,00.0	10,00.0	1	Used	Already reconditioned.	ST468
5	CMS330TC	127	2004	12,00.0	10,00.0	1	Used		ST468
6	CMS330TC	127	2004	12,00.0	10,00.0	1	Used		ST468
7	CMS330TC	127	2004	12,00.0	10,00.0	1	Used		ST468
8	CMS330TC	127	2004	12,00.0	10,00.0	1	Used		ST468
9	CMS330TC	127	2004	12,00.0	10,00.0	1	Used		ST468
10	CMS330TC	127	2004	12,00.0	10,00.0	1	Used		ST468
11	CMS330TC	127	2004	12,00.0	10,00.0	1	Used		ST468
12	CMS330TC	127	2004	12,00.0	10,00.0	1	Used	Already reconditioned.	ST468
13	CMS330TC	127	2004	12,00.0	10,00.0	1	Used		ST468
14	CMS330TC-R	127	2003	12,00.0	12,00.0	1	Used		ST268
15	CMS330TC-R	127	2003	12,00.0	12,00.0	1	Used		ST268
16	CMS330TC-T	183	2003	06,00.2	06,00.2	1	Demo		ST468
17	CMS330TC-T	183	2003	06,00.2	06,00.2	1	Demo		ST468
18	CMS330TC-T	183	2004	06,00.2	06,00.2	1	Demo		ST468
19	CMS330TC-T	183	2004	06,00.2	06,00.2	1	Used		ST468
20	CMS330TC-T	183	2004	07,00.2	07,00.2	1	Demo		ST468
21	CMS330TC-T	183	2004	07,00.2	07,00.2	1	Used		ST468
22	CMS330TC-T	183	2004	07,00.2	07,00.2	1	Used		ST468
23	CMS330TC-T	183	2004	07,00.2	07,00.2	1	Used		ST468
24	CMS330TC-T	183	2002	14,00.0	14,00.0	1	Demo		ST468
25	CMS340TC-L	183	2000	05,00.2	05,00.2	1	Used		ST168
26	CMS340TC-L	183	2000	12,00.0	12,00.0	1	Used		ST168
27	CMS411TC	244	2003	08,00.0	08,00.0	1	Used		ST268
28	CMS411TC	244	2003	12,00.0	12,00.0	1	Used		ST268
29	CMS420EMG	115	2007	07,00.2	07,00.2	1	Used		OKC
30	CMS433TC	244	2001	12,00.0	10,00.0	1	Used		ST168
31	CMS433TC	244	2002	12,00.0	10,00.0	1	Used	Already reconditioned.	ST268
32	CMS433TC	244	2002	12,00.0	10,00.0	1	Used	Already reconditioned.	ST268
33	CMS433TC	244	2002	12,00.0	10,00.0	1	Used		ST268
34	CMS433TC	244	2005	12,00.0	12,00.0	1	Used		ST468
35	CMS433TC	244	2005	12,00.0	12,00.0	1	Used		ST468
36	CMS433TC	244	2005	12,00.0	12,00.0	1	Used		ST468
37	CMS433TC	244	1999	14,00.0	14,00.0	1	Used		ST168
38	CMS433TC	244	1999	14,00.0	14,00.0	1	Used		ST168
39	CMS433TC	244	2002	14,00.0	14,00.0	1	Used		ST268
40	CMS433TC	244	2002	14,00.0	14,00.0	1	Used		ST268
41	CMS433TC	244	2002	14,00.0	14,00.0	1	Used		ST268
42	CMS433TC	244	2002	14,00.0	14,00.0	1	Used		ST268
43	CMS502	115	2010	07,00.2	07,00.2	1	Demo		OKC

Pos.	Model	KW	Year	Gauge	Needle	QTY	Info I	Additional Information	System
44	CMS502HP	115	2012	02,50.2	04,0L.2	1	Demo		OKC3.0
45	CMS502HP	115	2011	07,00.0	07,00.0	1	Demo		OKC3.0
46	CMS502HP	115	2011	07,00.0	07,00.0	1	Demo		OKC3.0
47	CMS502HP	115	2011	07,00.2	07,00.2	1	Demo		OKC3.0
48	CMS502HP	115	2011	07,00.2	07,00.2	1	Demo		OKC3.0
49	CMS502HP	115	2012	07,00.2	07,00.2	1	Demo		OKC3.0
50	CMS502HP	115	2011	10,00.0	10,00.0	1	Used		OKC3.0
51	CMS502HP	115	2011	12,00.0	12,00.0	1	Used		OKC3.0
52	CMS502HP	127	2012	14,00.0	14,00.0	1	Demo		OKC3.0
53	CMS520C	127	2012	03,00.0	03,00.0	1	Demo		OKC3.0
54	CMS530	127	2008	07,00.0	07,00.0	1	Used	Intarsia.	OKC
55	CMS530	127	2008	07,00.0	07,00.0	1	Used	Intarsia.	OKC
56	CMS530	127	2008	07,00.2	07,00.2	1	Demo		OKC
57	CMS530	127	2005	08,00.0	08,00.0	1	Demo		OKC
58	CMS530	127	2008	10,00.0	10,00.0	1	Demo		OKC
59	CMS530	127	2008	10,00.0	10,00.0	1	Used	Intarsia.	OKC
60	CMS530	127	2008	10,00.0	10,00.0	1	Used	Intarsia.	OKC
61	CMS530	127	2007	12,00.0	10,00.0	1	Used	Already reconditioned.	OKC
62	CMS530	127	2008	14,00.0	14,12.0	1	Used		OKC
63	CMS530	127	2008	14,00.0	14,12.0	1	Used		OKC
64	CMS530	127	2008	14,00.0	14,12.0	1	Used		OKC
65	CMS530	127	2008	14,00.0	14,12.0	1	Used		OKC
66	CMS530	127	2008	14,00.0	14,12.0	1	Used		OKC
67	CMS530	127	2008	16,00.0	16,00.0	1	Used		OKC
68	CMS530HP	127	2010	07,00.2	07,00.2	1	Demo	Intarsia.	OKC3.0
69	CMS530HP	127	2011	07,00.2	07,00.2	1	Demo	Intarsia.	OKC3.0
70	CMS530HP	127	2008	08,00.2	08,00.2	1	Demo		OKC3.0
71	CMS530HP	127	2010	08,00.2	08,00.2	1	Demo		OKC3.0
72	CMS530HP	127	2010	08,00.2	08,00.2	1	Used		OKC3.0
73	CMS530HP	127	2010	08,00.2	08,00.2	1	Used		OKC3.0
74	CMS530HP	127	2010	08,00.2	08,00.2	1	Used		OKC3.0
75	CMS530HP	127	2010	08,00.2	08,00.2	1	Used		OKC3.0
76	CMS530HP	127	2010	08,00.2	08,00.2	1	Used		OKC3.0
77	CMS530HP	127	2011	08,00.2	08,00.2	1	Demo		OKC3.0
78	CMS530HP	127	2011	08,00.2	08,00.2	1	Used		OKC3.0
79	CMS530HP	127	2010	10,00.0	10,00.0	1	Used		OKC3.0
80	CMS530HP	127	2012	10,00.0	10,00.0	1	Demo		OKC3.0
81	CMS530HP	127	2011	14,00.0	14,12.0	1	Demo		OKC3.0
82	CMS530HP	127	2010	16,00.0	16,00.0	1	Demo		OKC3.0
83	CMS530HP	127	2010	16,00.0	16,00.0	1	Demo		OKC3.0
84	CMS530HP	127	2010	16,00.0	16,00.0	1	Demo		OKC3.0
85	CMS530HP	127	2010	16,00.0	16,00.0	1	Demo		OKC3.0
86	CMS530HP	127	2010	16,00.0	16,00.0	1	Demo		OKC3.0
87	CMS530HP	127	2010	16,00.0	16,00.0	1	Demo		OKC3.0
88	CMS530HP	127	2010	16,00.0	16,00.0	1	Demo		OKC3.0
89	CMS530HP	127	2010	16,00.0	16,00.0	1	Demo		OKC3.0
90	CMS530HP	127	2010	16,00.0	16,00.0	1	Demo		OKC3.0
91	CMS530HP	127	2009	18,00.0	18,00.0	1	Demo		OKC3.0
92	CMS530HP	127	2009	18,00.0	18,00.0	1	Used		OKC3.0
93	CMS530HP	127	2009	18,00.0	18,00.0	1	Used		OKC3.0
94	CMS530HP	127	2011	18,00.0	18,00.0	1	Demo	Intarsia.	OKC3.0
95	CMS530HP	127	2011	18,00.0	18,00.0	1	Demo	Intarsia.	OKC3.0
96	CMS530T	127	2011	14,00.0	14,00.0	1	Demo		OKC3.0
97	CMS730S	183	2006	07,00.2	07,00.2	1	Used		OKC
98	CMS730S	183	2006	07,00.2	07,00.2	1	Used		OKC
99	CMS730S	183	2006	07,00.2	07,00.2	1	Used		OKC
100	CMS730S	183	2008	09,00.2	09,00.2	1	Demo		OKC
101	CMS822	213	2008	07,00.2	07,00.2	1	Used	Already reconditioned.	OKC
102	CMS822	213	2008	07,00.2	07,00.2	1	Used	Already reconditioned.	OKC
103	CMS822	213	2009	18,00.0	18,00.0	1	Used		OKC
104	CMS822	213	2009	18,00.0	18,00.0	1	Used		OKC
105	CMS822	213	2009	18,00.0	18,00.0	1	Used		OKC
106	CMS822	213	2009	18,00.0	18,00.0	1	Used		OKC
107	CMS822HP	213	2010	05,00.2	05,00.2	1	Used		OKC
108	CMS822HP	213	2010	05,00.2	05,00.2	1	Used		OKC
109	CMS822HP	213	2010	05,00.2	05,00.2	1	Used		OKC

Pos.	Model	KW	Year	Gauge	Needle	QTY	Info I	Additional Information	System
110	CMS822HP	213	2010	05,00.2	05,00.2	1	Used		OKC
111	CMS822HP	213	2010	05,00.2	05,00.2	1	Used		OKC
112	CMS822HP	213	2010	05,00.2	05,00.2	1	Used		OKC
113	CMS822HP	213	2012	06,00.2	06,00.2	1	Demo		OKC3.0
114	CMS822HP	213	2012	06,00.2	06,00.2	1	Demo		OKC3.0
115	CMS822HP	213	2012	06,00.2	06,00.2	1	Demo		OKC3.0
116	CMS822HP	213	2011	07,00.2	07,00.2	1	Demo		OKC3.0
117	CMS822HP	213	2012	18,00.0	18,00.0	1	Demo		OKC3.0
118	CMS830C	213	2011	02,50.2	02,50.2	1	Demo		OKC3.0
119	CMS830C	213	2011	02,50.2	02,50.2	1	Demo		OKC3.0
120	CMS830C	213	2012	02,50.2	02,50.2	1	Demo		OKC3.0
121	CMS830S	218	2008	07,00.2	07,00.2	1	Demo		OKC
122	CMS830S	218	2008	07,00.2	07,00.2	1	Demo		OKC
123	CMS830S	218	2008	09,00.2	09,00.2	1	Used		OKC
124	CMS933HP	244	2011	07,00.0	07,00.0	1	Used		OKC3.0
125	CMS933HP	244	2011	07,00.0	07,00.0	1	Used	Already reconditioned.	OKC3.0
126	CMS933HP	244	2011	07,00.0	07,00.0	1	Used	Already reconditioned.	OKC3.0
127	CMS933HP	244	2011	07,00.0	07,00.0	1	Used	Already reconditioned.	OKC3.0
128	SIRIX 110	>	>	>	>	12	Demo	SIRIX 110 / 256 MB memory / 300 MHz / R5000sc CPU, 2D software licence / 18 GB disk and CD ROM drive / (without monitor and MO drive).	<