



STOLL

M1PLUS®
WWW.STOLL.COM/M1PLUS

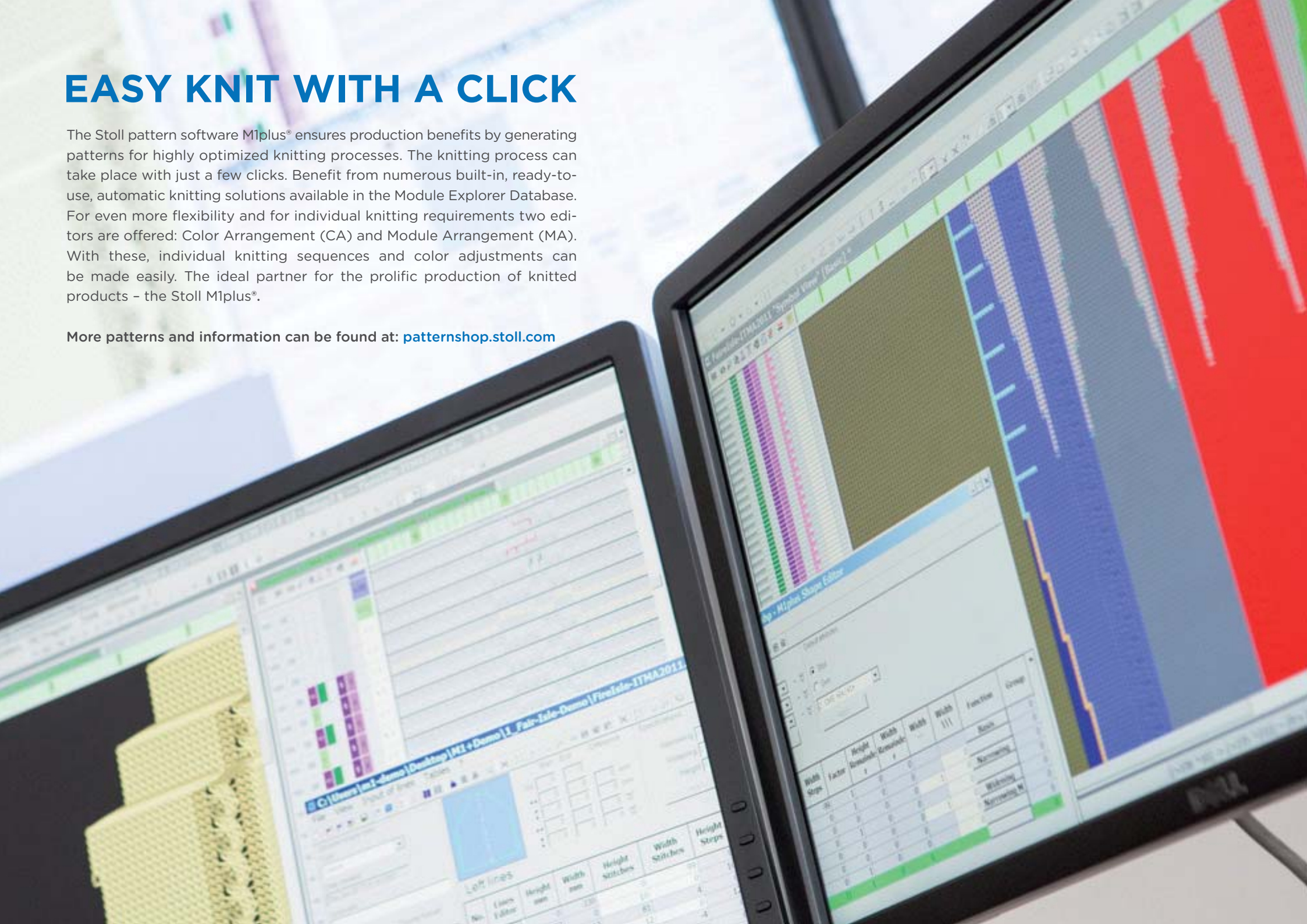
PATTERN SOFTWARE M1PLUS®

THE MOST OPTIMIZED KNITTING
POSSIBLE - WITH STOLL

EASY KNIT WITH A CLICK

The Stoll pattern software M1plus® ensures production benefits by generating patterns for highly optimized knitting processes. The knitting process can take place with just a few clicks. Benefit from numerous built-in, ready-to-use, automatic knitting solutions available in the Module Explorer Database. For even more flexibility and for individual knitting requirements two editors are offered: Color Arrangement (CA) and Module Arrangement (MA). With these, individual knitting sequences and color adjustments can be made easily. The ideal partner for the prolific production of knitted products - the Stoll M1plus®.

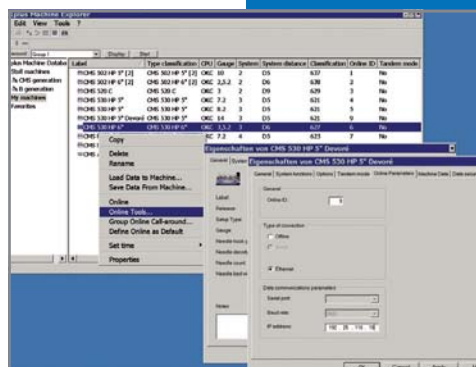
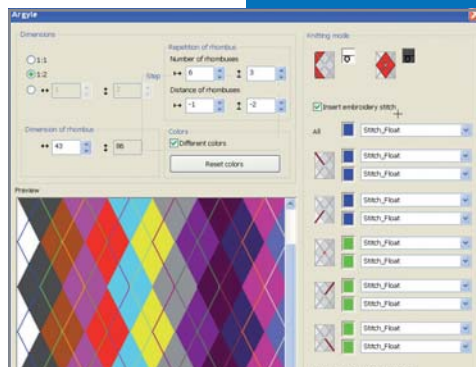
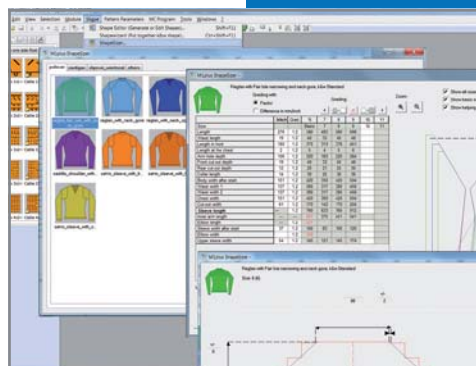
More patterns and information can be found at: patternshop.stoll.com



TOOLS

The tools included in the Stoll M1plus® offer optimum support for time-saving and reliable pattern creation.

Different views, such as the Symbol view, Fabric view or Technical view, make realizing complex garments easy. The M1plus® enables a workflow which saves time and ensures a highly optimized knitting process. Whether it's shaping, size specifications or color variations, the M1plus® tools are intuitive to use without losing sight of the individuality necessary for personalized knitting production. The pattern software can be applied alongside all knitting techniques without any problems, both for Fully Fashion and for knit and wear patterns.



SHAPE TOOLS

Fully Fashion and knit and wear garments can be realized quickly and easily with the help of the Shape Editor and the ShapeSizer. A huge variety of pre-defined styles, such as pullovers, cardigans and trousers or accessories like caps, scarves and much more, can be adapted to any desired stitch density or making-up size with the Shape Tools. Narrowing is already automatically pre-set, but individual adjustment is possible at all times.

ARGYLE TOOL

The M1plus® can be used to realize the popular argyle color design using the Argyle Tool. The technical requirements for creating the pattern are already automatically pre-set.

MODULE SUPPORT

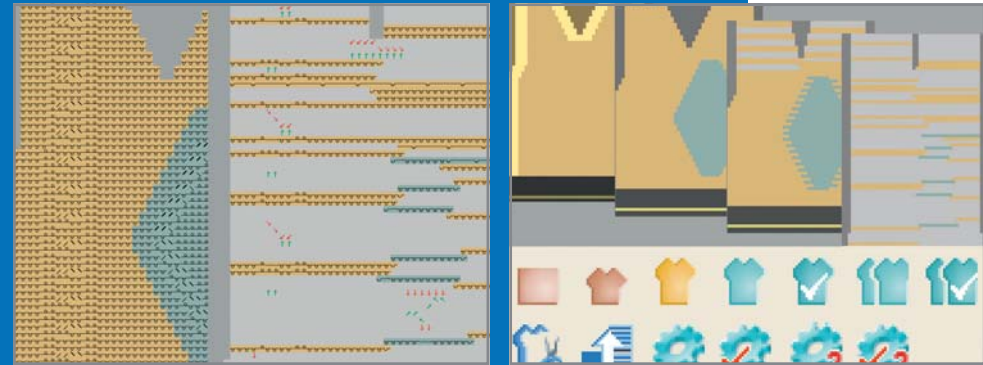
In order to be able to use individual modules correctly according to their function, practical help functions provide assistance. Most of the modules have a detailed description which can be viewed by right-clicking with the mouse. This way, it is quick and easy to maintain an overview of the modules and their functions.

MACHINE EXPLORER

All Stoll machines can be found in the Machine Explorer. It is possible to create a personal machine database - a useful tool which greatly facilitates the individual knitting production process. In this way, options such as main auxiliary and comb take-down, clamping and cutting device, tandem mode and online parameters can be customized. In addition, data can be securely loaded and saved in a machine, and counter settings can be implemented.

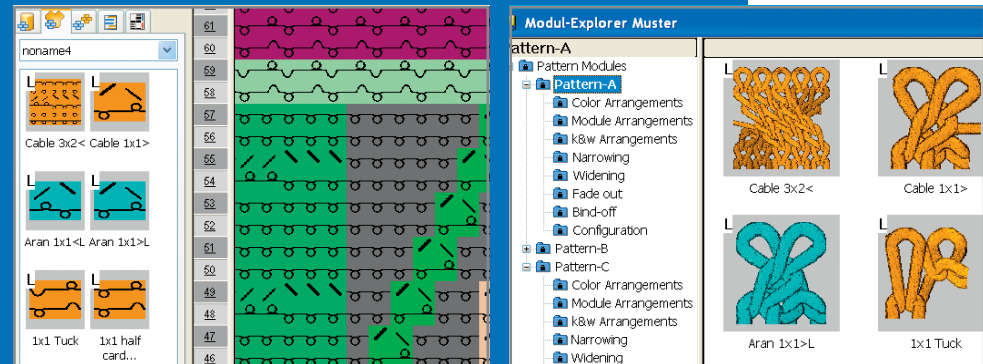
AUTOMATIC TECHNICAL EDITING

Saves several working steps: the Automatic Technical Editing completes knitting techniques where necessary, recognizes conflicts and offers possible solution processes. This can be conducted with just one mouse click and, if required, be re-set to the original pattern state at any time.



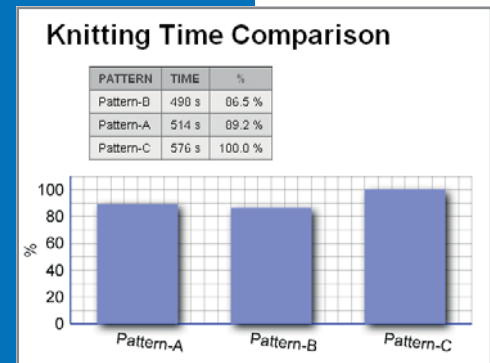
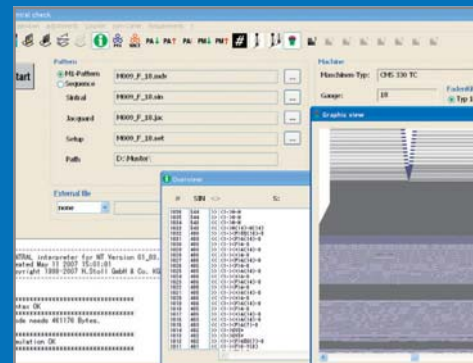
SIMPLE OPERATION

Working with the M1plus® guarantees the optimum level of productivity, partially thanks to the intuitive operation. The Module Explorer Database contains numerous ready-to-use pattern elements and modules. All applied modules are performed and saved within the programmed pattern, through which an overview is constantly maintained. This makes using the M1plus® particularly comfortable and easy.



SINTRAL CHECK / CALCULATION OF KNITTING TIME AND YARN USE

The Sintral Check checks that each individual pattern can be realized flawlessly. In order to guarantee economical production planning, the M1plus® also makes available a calculation of the knitting time and yarn consumption. The knitting time comparison is an interesting tool for the optimization of individual patterns.



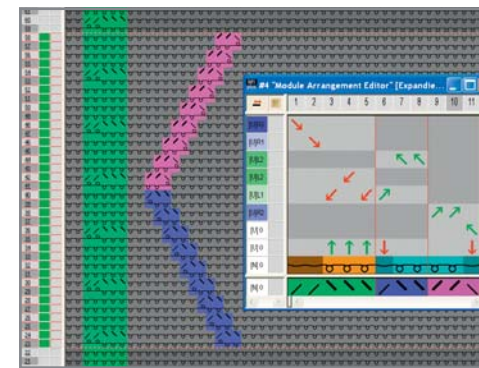
MORE FREEDOM IN KNITTING

The Stoll M1plus® is the simple solution for fast and uncomplicated knitting. At the same time, it offers enough individual scope to adjust knitting programs according to personal specifications and wishes. The Module Arrangement and

the Color Arrangement are the optimum tools for manually influencing knitting sequences and guaranteeing individualized knitting production.

MODULE ARRANGEMENT

With the Module Arrangement Tool, various modules can be manually adjusted according to individual specifications. This makes possible the programming of a completely individual knitting sequence that is matched to personal production requirements. Via “expanding”, new modules are arranged in the software. Here, both complete patterns and individual knitting rows are adjustable. The individualized Module Arrangements can be treated like any pre-made M1plus® module and can be reused at any time. The Module Arrangement Tool actively supports the optimization of knitting sequences – both with Fully Fashion garments and with the production of knit and wear products.



COMPILING MODULES

When a particular area is selected, the M1plus® compiles all the modules within this selection and displays them in the Arrangement Editor along with a ready-to-use proposal.

COLOR ARRANGEMENT

The Color Arrangement Tool enables the manual creation of new color dispositions within a pattern. This means that, for example, a knitting row can be divided into several knitting rows. Thus the number of rows can be changed, for example, if this is necessary for individual Intarsia garments. Via “expanding”, the changes from Color Arrangement are carried out in the program. Problems such as stowing the yarn carriers can be easily controlled using Color Arrangements. The individualized color dispositions can subsequently be treated like any pre-made M1plus® module and can be reused at any time. The Color Arrangement Tool is designed for both Fully Fashion garments and knit and wear products, offering complete flexibility.



COMPILING COLORS

When a particular pattern area is selected, the M1plus® compiles all colors used and their disposition in the Color Editor.

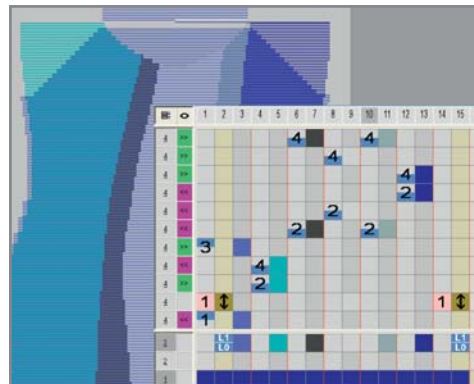
THE KNIT AND WEAR SUPPORT

SIMPLIFIED KNIT AND WEAR WITH THE M1PLUS®

The Stoll pattern software M1plus® makes programming knit and wear products simple. A number of ready-to-use Knit and Wear modules can be found in the Stoll Module Explorer Database. Furthermore, the software offers additional support: the Knit and Wear Training Manual and the Knit and Wear Technique Template provide know-how on production and design, structured in modules.

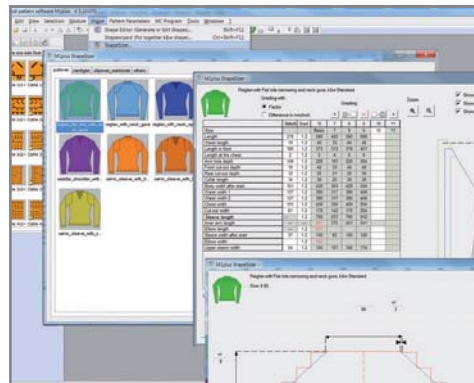
KNIT AND WEAR COLOR ARRANGEMENTS

Generate completely new knit and wear knitting sequences - with the special Color Arrangements for Stoll-knit and wear®, this can be done without any problems. The different tools offer special advantages for producing innovative Knit and Wear garments. Even Intarsia patterns can be implemented extremely easily.



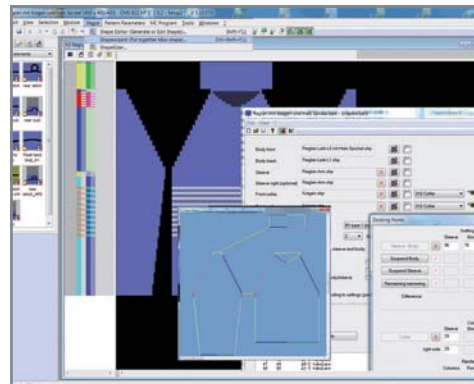
SHAPE TOOLS

A huge variety of pre-defined Knit and Wear shapes can be freely adapted to any desired size or stitch density with the Shape Tools. Millimeters and imperial units are set in relation to one another using a factor. Narrowing is already automatically pre-set, but can also be individually adjusted.



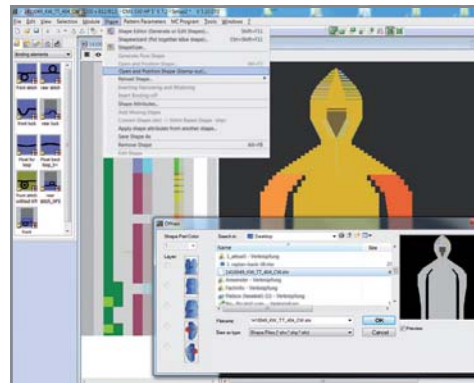
SHAPE WIZARD

Individual shape parts are joined together with the Shape Wizard to create a seamless Knit and Wear garment. The corresponding Knit and Wear Arrangements are automatically generated and inserted.



STAMP-OUT

Stoll has developed the Stamp-out Tool especially for unusual Knit and Wear garments and individual garment requirements. It creates room for even more individuality: the realization of personalized Knit and Wear creations and patterns knows practically no bounds.



KNIT AND WEAR SOLUTIONS



KNIT AND WEAR TRAINING MANUAL - ILLUSTRATED KNOWLEDGE

- Basic training: all the basics for Stoll-knit and wear® knitting technology at a glance
- Prepared content for easy learning of Stoll-knit and wear® knitting technology
- Step by step instructions until the knit and wear product is finished
- Refresh your knowledge quickly and easily

STOLL SUPPORTS YOU AT ANY TIME - PLEASE CONTACT US:

m1-helpline@stoll.com

KNIT AND WEAR TECHNIQUE TEMPLATE - READY PATTERN SOLUTIONS

- Catalogue with pattern examples for knit and wear solutions such as gore, shoulder, widening and narrowing techniques, etc.
- Adjustment of existing basic pattern to any desired size
- Elements from different patterns can be combined into a totally new one, according to your own requirements and ideas
- Illustrated explanation of the whole knit and wear process as well as the pattern creation in single steps
- Explanation of each Knit and Wear Module with example pictures and text instructions

ADDITIONAL HIGHLIGHTS

- Comprehensive Module Database with Module Explorer for fast and simple selection of the desired modules
- Automatic transfer of a pattern using the 1x1 technique for knitting on one of our Multi Gauge machines
- Support for doubling
- Convenient "Find and replace" function
- Image import function for automatic conversion of BMP and TIF files to knitting data
- Convenient help system
- Single pattern preparation, two-part knitting
- Online function for fast transfer of the program to the knitting machine
- Connection to shaping programs via DXF files
- Transfer of programs from one machine type to another by clicking the mouse

MINIMUM SYSTEM REQUIREMENTS

- CPU: Intel Core2Duo or equivalent
- Hard disk: 120 GB SATA
- RAM: 2 GB (recommended: 4 GB)
- DVD drive
- Graphics/monitor: 1400 x 1050
(recommended: dual head with 1600 x 1200 resolution or higher on each output)
- USB 2.0
- Serial port for serial KMC adapter, if applicable
- Internal or external 3.5" floppy disc drive, if applicable
- Windows 7 32-bit (recommended: Windows 7 64-bit) or Windows 8 32-bit (recommended: Windows 8 64-bit) with Internet connection for installation



STOLL

H. Stoll AG & Co. KG
Stollweg 1
72760 Reutlingen
Germany

Tel.: +49 (0) 7121-313-0
Fax: +49 (0) 7121-313-110

contact@stoll.com
www.stoll.com

M1PLUS®
WWW.STOLL.COM/M1PLUS